

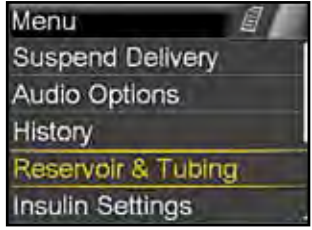
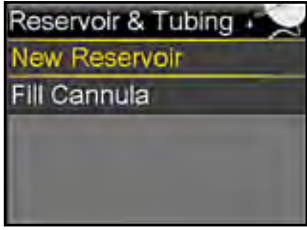
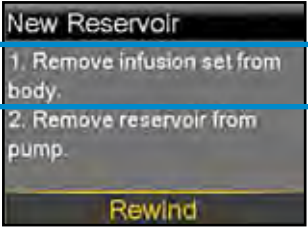



START HERE:

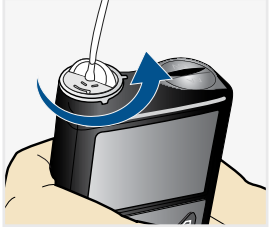
1.  Wash your hands. Press .

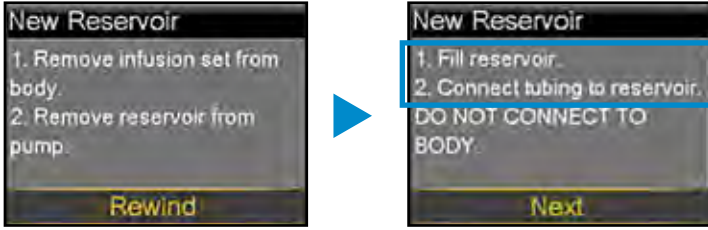
2.  Select **Reservoir & Tubing**.

3.  Select **New Reservoir**.

4.  Remove the infusion set you have been using by loosening the adhesive and pulling away from body.

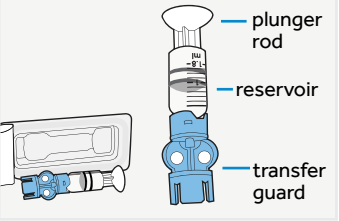
5.  Remove the used reservoir from the pump.

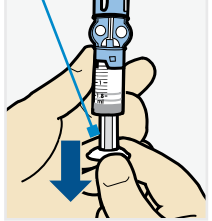
6.  Select **Rewind**.

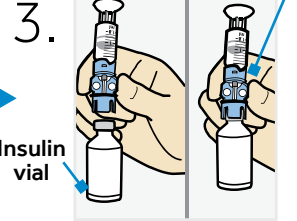


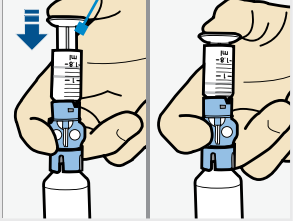
FILL RESERVOIR & CONNECT TO THE INFUSION SET TUBING

Follow the next steps to fill reservoir with insulin and connect to the infusion set tubing.

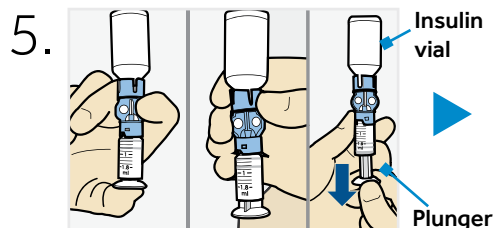
1.  Remove from package. Make sure insulin vial is at room temperature to reduce the risk of air bubbles.

2.  Pull plunger down to the amount that you plan to fill with insulin.

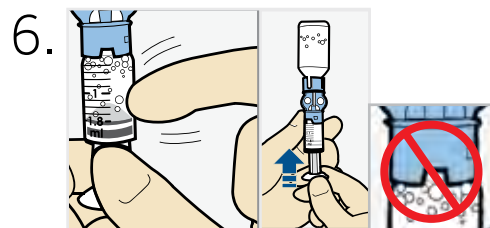
3.  Wipe vial with alcohol. Place vial on table. Firmly press the blue transfer guard onto vial.

4.  Push and hold plunger down.

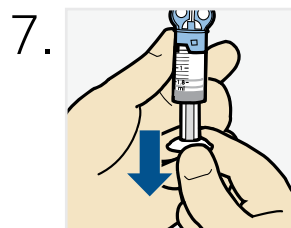
WARNING: Do not use the reservoir or infusion set if any liquid gets on the top of the reservoir or inside the tubing connector. Liquid can temporarily block the vents and may result in the delivery of too little or too much insulin, which can cause hyperglycemia or hypoglycemia.



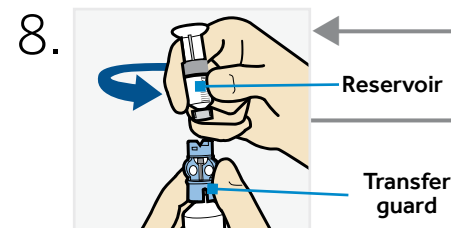
5. With your thumb still on the plunger, flip over so vial is on top. Release thumb and pull plunger down to fill with insulin.



6. Tap the reservoir to move air bubbles to top of reservoir. Push plunger up to move air into vial.



7. If needed, pull plunger back down to amount of insulin needed for 2-3 days.



8. To avoid getting insulin on the top of the reservoir, turn vial over so it is upright. Hold transfer guard and turn reservoir counter-clockwise and remove from transfer guard.

CONNECT RESERVOIR TO INFUSION SET

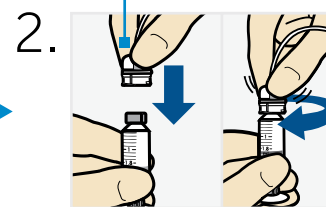
You will place the reservoir connector onto the end of the infusion set to the filled reservoir.

1.

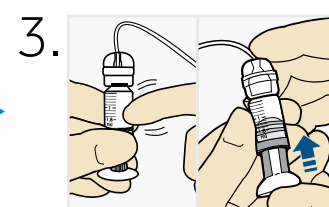


Remove infusion set from package. Remove the paper that holds the tubing together and unwind.

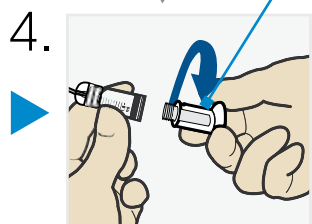
Connector



2. Gently push tubing connector onto reservoir. Turn clockwise until locked. You will hear a click.



3. If you see air bubbles, tap reservoir to move them to top. Push plunger just a bit to move them into tubing.



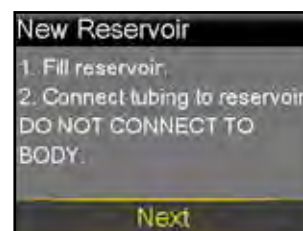
4. Twist plunger counter-clockwise to loosen and remove.

THE BACKLIGHT MAY HAVE TURNED OFF

Press any button to turn the screen back on.



Select **Load Reservoir** and unlock pump if necessary.

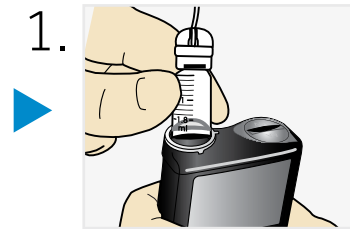
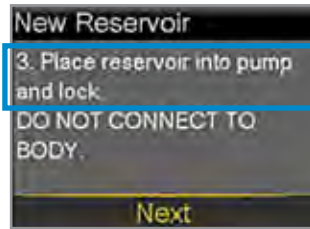


Select **Next**.

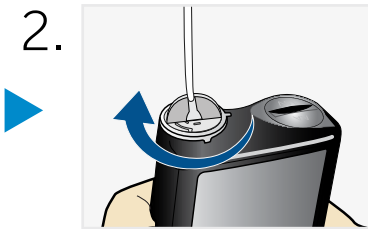
Continued on next page

PLACE RESERVOIR INTO PUMP

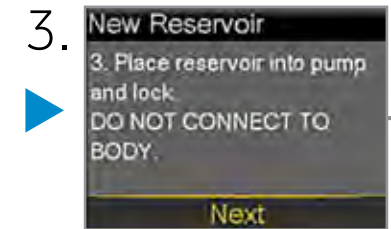
Now place the filled reservoir into the reservoir compartment of the pump.



Place reservoir into pump.



Turn clockwise until you feel reservoir lock into place.



Select **Next**

LOAD RESERVOIR AND FILL TUBING

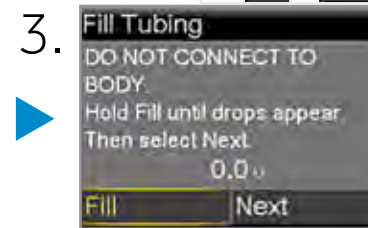
Follow these steps to load the reservoir and fill the tubing.



Select **Load** and keep holding .

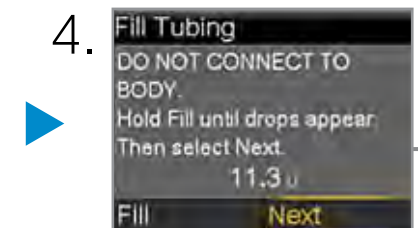


When you see this screen, select **Next**.



Select **Fill** and keep holding until you see drops at the end of tubing, then let go.

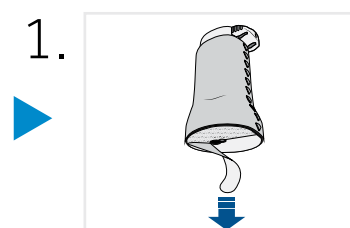
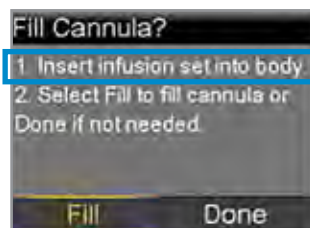
Drops at end of tubing



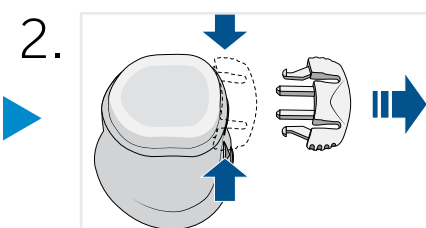
After you see drops, press and select **Next**.

INSERTING THE MINIMED MIO ADVANCE INFUSION SET

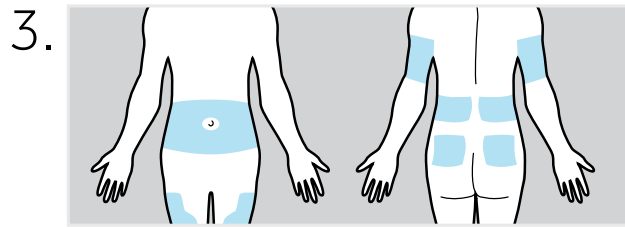
Next, follow the steps to insert the infusion set into your body.



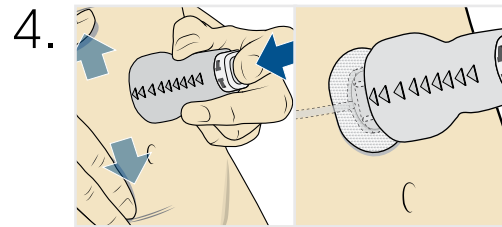
Remove the paper backing from the adhesive. Be careful not to touch the adhesive.



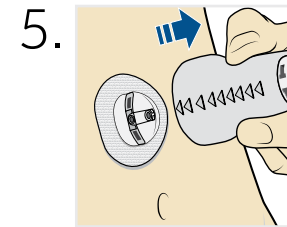
Remove the disconnect cover from the insertion device by gently squeezing the sides of the disconnect cover then pulling it away from the insertion device. Keep the disconnect cover for later use.



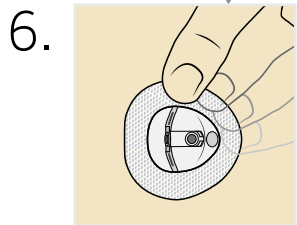
3. The best areas of the body to insert the infusion set are shown in the shaded areas of this drawing. Choose areas that are away from the natural bend of your waist or belt line of your pants. Avoid areas of hard or scar tissue. Consult with your healthcare provider on appropriate areas to insert your infusion set.



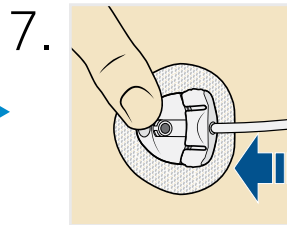
4. Stretch the skin until smooth. Place the insertion device in the desired location on your skin. The raised arrows indicate the direction to connect the tubing. Press the top button completely down to insert the infusion set.



5. Gently and carefully remove the insertion device by pulling straight away from your body.



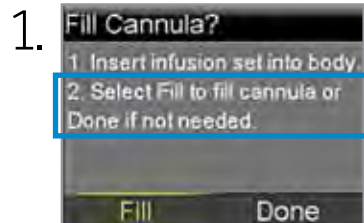
6. Press the adhesive onto the skin with your finger. Replace the infusion set if the adhesive does not stick to the skin



7. Gently hold the cannula housing steady with your finger. Then push the site connector straight into the cannula housing until you hear a click.

Dispose of the insertion device in an appropriate sharps container and in accordance with your local laws.

FILL CANNULA
You will now fill the cannula, the little tube under your skin, with insulin.



Select **Fill**.



Select **Fill amount** and enter: 0.600 for both the 6mm and 9mm cannula. Then press .

Your pump will remember the **Fill amount** that you used last. Always verify that the Fill amount is correct.

- If it is correct, press to Fill Now and press .
- If it is incorrect, press . Change to correct amount and. Press .

Fill Now.



Select **Fill Now**.

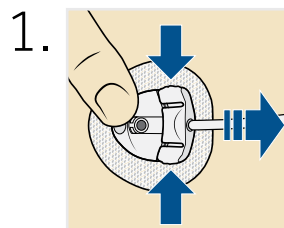


The Home screen displays the insulin as it fills the cannula.

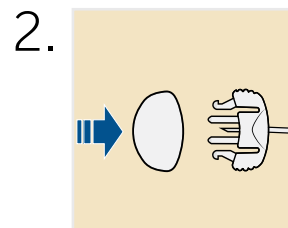
Select **Stop Filling** if you need to stop, for example, if you notice the **Total** amount is incorrect. This should rarely happen if you have verified the **Fill amount** on the previous screen.

Your infusion set change is now complete!

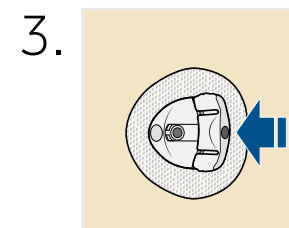
DISCONNECTING THE INFUSION SET FROM YOUR BODY



To disconnect, gently hold the cannula housing steady with your finger. Then squeeze the sides of the site connector and pull it out from the cannula housing.

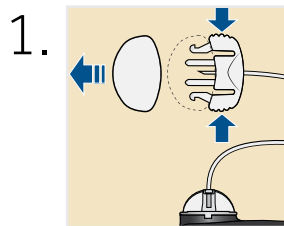


Put the white cap on the site connector.

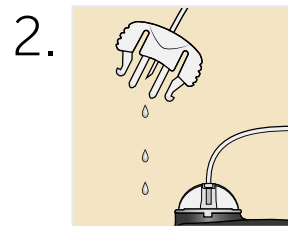


Put the disconnect cover in the cannula housing. Then push the cover into the cannula housing until you hear a click.

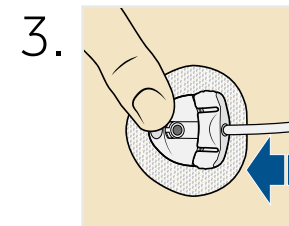
RECONNECTING THE INFUSION SET TO YOUR BODY



Remove the white cap from the site connector by squeezing the side of the site connector then pulling the white cap off.



Ensure there is no air in the tubing. **ONLY** if there is air in the tubing: Fill the tubing with insulin and watch for drops as instructed. Do not leave any air in the tubing.



Use your finger to gently hold the cannula housing steady. Push the site connector into the cannula housing until you hear a click.